



# MORECAMBE



FLOTATION ENERGY

## Morecambe Offshore Windfarm: Generation Assets Development Consent Order Documents

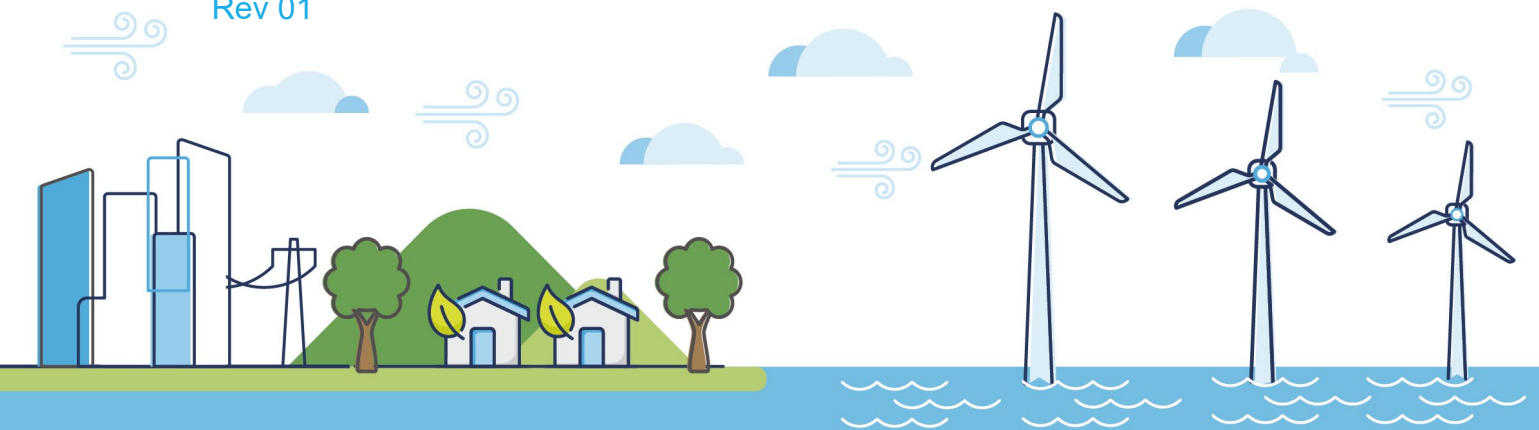
### Volume 4

### Outline Compensation Implementation and Monitoring Plan

PINS Document Reference: 4.11.1

APFP Regulation: 5(2)(g)

Rev 01



## Document History

<b>Doc No</b>	MOR001-FLO-CON-ENV-RPT-0010	<b>Rev</b>	01
<b>Alt Doc No</b>	PC1165-RHD-ES-XX-RP-Z-0054		
<b>Document Status</b>	Approved for Use	<b>Doc Date</b>	May 2024
<b>PINS Doc Ref</b>	4.11.1	<b>APFP Ref</b>	5(2)(g)

<b>Rev</b>	<b>Date</b>	<b>Doc Status</b>	<b>Originator</b>	<b>Reviewer</b>	<b>Approver</b>	<b>Modifications</b>
01	May 2024	Approved for Use	Royal HaskoningDHV	Morecambe Offshore Windfarm Ltd	Morecambe Offshore Windfarm Ltd	n/a

## Contents

1	Introduction .....	8
1.1	Project Background .....	8
1.2	Purpose of this document.....	9
2	Background .....	9
3	Consultation .....	9
4	Habitat Management.....	10
4.1	Scale and Location of Compensation.....	10
4.2	Design .....	10
4.3	Delivery Process .....	10
4.4	Monitoring and Adaptive Management.....	10
4.5	Reporting.....	11
5	Construction of a Mammalian Predator-proof Exclusion Fence and Mammalian Predator Removal.....	11
5.1	Scale and Location of Compensation.....	11
5.2	Design .....	11
5.3	Delivery Process .....	11
5.4	Monitoring and Adaptive Management.....	12
5.5	Reporting.....	12

## Glossary of Acronyms

AfL	Agreement for Lease
CIMP	Outline Compensation Implementation and Monitoring Plan
DCO	Development Consent Order
EIA	Environmental Impact Assessment
ESO	Electricity System Operator
HNDR	Holistic Network Design Review
HRA	Habitats Regulations Assessment
LBBGCSG	Lesser black-backed gull Compensation Steering Group
MRF	Marine Recovery Fund
OSP	Offshore Substation Platform
OTNR	Offshore Transmission Network Review
RIAA	Report to Inform Appropriate Assessment
UK	United Kingdom
WTG	Wind Turbine Generator

## Glossary of Unit Terms

GW	Gigawatt
----	----------

## Glossary of Terminology

Applicant	Morecambe Offshore Windfarm Ltd
Application	This refers to the Applicant's application for a Development Consent Order (DCO). An application consists of a series of documents and plans which are published on the Planning Inspectorate's (PINS) website.
Generation Assets (the Project)	Generation assets associated with the Morecambe Offshore Windfarm. This is infrastructure in connection with electricity production, namely the fixed foundation wind turbine generators (WTGs), inter-array cables, offshore substation platform(s) (OSP(s)) and possible platform link cables to connect OSP(s).
Inter-array cables	Cables which link the WTGs to each other and the OSP(s).
Morgan and Morecambe Offshore Wind Farms: Transmission Assets	The transmission assets for the Morgan Offshore Wind Project and the Morecambe Offshore Windfarm. This includes OSP(s) <sup>1</sup> , interconnector cables, Morgan offshore booster station, offshore export cables, landfall site, onshore export cables, onshore substations, 400kV cables and associated grid connection infrastructure such as circuit breaker infrastructure.  Also referred to in this chapter as the Transmission Assets, for ease of reading.
Offshore substation platform(s)	A fixed structure located within the windfarm site, containing electrical equipment to aggregate the power from the WTGs and convert it into a more suitable form for export to shore.
Wind turbine generator (WTG)	A fixed structure located within the windfarm site that converts the kinetic energy of wind into electrical energy.
Windfarm site	The area within which the WTGs, inter-array cables, OSP(s) and platform link cables will be present.

---

<sup>1</sup> At the time of writing the Environmental Statement, a decision had been taken that the offshore substation platforms (OSPs) would remain solely within the Generation Assets application and would not be included within the Development Consent Order (DCO) application for the Transmission Assets. This decision post-dated the Preliminary Environmental Information Report (PEIR) that was prepared for the Transmission Assets. The OSPs are still included in the description of the Transmission Assets for the purposes of this document as the in-combination effects assessment carried out in respect of the Generation/Transmission Assets is based on the information available from the Transmission Assets PEIR and associated Habitats Regulation documentation.



# The future of renewable energy

A leading developer in Offshore Wind Projects

# 1 Introduction

## 1.1 Project Background

1. Morecambe Offshore Windfarm Ltd ('the Applicant') is applying for a Development Consent Order (DCO) for the Morecambe Offshore Windfarm Generation Assets (hereafter 'the Project'). The Project was one of six projects selected by The Crown Estate in its Offshore Wind Leasing Round 4 in 2021. The Agreement for Lease (AfL) for the project was received in 2023.
2. The Project includes the Generation Assets to be located within the offshore windfarm site (wind turbine generators (WTGs), inter-array cables, offshore substation platform(s) (OSP(s)) and possible platform link cables to connect OSPs).
3. A separate DCO consent for the Transmission Assets associated with the Morecambe Offshore Windfarm and the Morgan Offshore Wind Project (another proposed Round 4 windfarm to be located in the Irish Sea) would be sought, as explained below.
4. Both the Morecambe Offshore Windfarm and the Morgan Offshore Wind Project have been scoped into the Pathways to 2030 workstream, under the Offshore Transmission Network Review (OTNR). Under the OTNR, the National Grid Electricity System Operator (ESO) is responsible for conducting a Holistic Network Design Review (HNDR) to assess options to improve the coordination of offshore wind generation connections and transmission networks. In July 2022, the United Kingdom (UK) Government published the Pathway to 2030 Holistic Network Design documents, which set out the approach to connecting 50 Gigawatts (GW) of offshore wind to the UK electricity network (National Grid ESO, 2022). The output of this process concluded that the Morecambe Offshore Windfarm and the Morgan Offshore Wind Project would both connect to the National Grid at Penwortham in Lancashire, and as such the developers are working collaboratively.
5. Consequently, effects from the Transmission Assets of the Morecambe Offshore Windfarm and the Morgan Offshore Wind Project have been screened and assessed separately, as part of a joint Transmission Assets Environmental Impact Assessment (EIA), Habitats Regulations Assessment (HRA) process and subsequent DCO application, to be submitted by Morecambe Offshore Windfarm Ltd and Morgan Offshore Wind Limited (the latter being the developer of the Morgan Offshore Wind Project). The separation of assessment has not impacted the conclusions drawn in the Project Report to Inform the Appropriate Assessment (RIAA) (Document Reference 4.9).



## 1.2 Purpose of this document

6. This document sets out the outline for a lesser black-backed gull Compensation Implementation and Monitoring Plan (CIMP) that will be developed by the Applicant, in consultation with the proposed Lesser black-backed gull Compensation Steering Group (LBBGCSG), should consent for the Project be granted and compensation of lesser black-backed gull be required.
7. The final CIMP will be developed in accordance with one of the compensatory measures described in the Habitats Regulations Assessment Without Prejudice Derogation Case (Document Reference 4.11). The Habitats Regulations Assessment Without Prejudice Derogation Case provides detailed evidence supporting the potential compensation measures for lesser black-backed gull.
8. The CIMP will include details, where relevant for each measure (as outlined in **Section 4** and **Section 5**) to be taken forward, of the:
  - Scale and location
  - Design
  - Delivery process
  - Delivery timeframe
  - Monitoring and adaptive management
  - Reporting requirements

## 2 Background

9. This section will provide context to the CIMP, confirming the reason for its need, its aims and objectives, and the latest project status.

## 3 Consultation

10. This section will summarise all relevant consultation that has taken place through the LBBGCSG in the development of the CIMP. It will capture any key decisions, agreements, and where relevant any outstanding issues under discussion (with clarity as to the steps necessary to resolve any such matters). Ongoing engagement, for example to provide updates on monitoring (post-discharge of the CIMP) will be outlined here.

## 4 Habitat Management

### 4.1 Scale and Location of Compensation

11. This section will identify the scale of compensation proposed to be provided, and how this relates to the consent decision made by the Secretary of State. This section will then also detail the specific location(s) at which the compensation will be delivered and the suitability of identified sites to deliver the compensation measure.
12. If the Applicant has elected to pay a contribution to the Marine Recovery Fund (MRF) or equivalent fund towards habitat management measures, then this section shall include the sum of the contribution as agreed between the Applicant and Defra or other body responsible for the operation of the MRF in consultation with the LBBGCSG.

### 4.2 Design

13. This section will identify the design for the habitat management measure on a site-by-site basis (dependent on the site(s) identified). The evidence base provided in support of the proposed compensatory measures (Habitats Regulations Assessment Without Prejudice Derogation Case (Document Reference 4.11)) and engagement with the LBBGCSG will be important in informing the specific design aspects of this measure.

### 4.3 Delivery Process

14. This section will identify the delivery process, including a timetable for delivery, nature and status of all consents, commercial agreements (including land access rights) and other relevant approvals that may be necessary for the compensation measure and a programme for any outstanding consents. The evidence base contained within the Habitats Regulations Assessment Without Prejudice Derogation Case (Document Reference 4.11) will help inform these aspects.

### 4.4 Monitoring and Adaptive Management

15. This section will identify the monitoring and adaptive management principles and processes that will have been agreed with the LBBGCSG, including survey methods; success criteria; adaptive management measures; timescales for the monitoring and monitoring reports to be delivered; and details of the mechanism to determine the need for any alternative compensation measures and/or implementation of adaptive management measures. It will be developed taking into account the evidence base that has been provided in support of the proposed compensation measures set out within the Habitats Regulations Assessment Without Prejudice Derogation Case (Document Reference 4.11). Following discharge of the lesser black-

backed gull CIMP, the LBBGCSG will be engaged in reviewing on-going monitoring and implementing adaptive management if required as outlined in **Section 3** (Consultation) above.

## 4.5 Reporting

16. This section will set out the reporting requirements associated with the monitoring and adaptive management. In doing so, it will confirm the necessary objectives and timescales for the reporting.

# 5 Construction of a Mammalian Predator-proof Exclusion Fence and Mammalian Predator Removal

## 5.1 Scale and Location of Compensation

17. This section will identify the scale of compensation proposed to be provided, and how this relates to the consent decision made by the Secretary of State. This section will then also detail the specific location(s) at which the compensation will be delivered and the suitability of identified sites to deliver the compensation measure.
18. If the Applicant has elected to pay a contribution to the MRF or equivalent fund, then this section shall include the sum of the contribution as agreed between the Applicant and Defra or other body responsible for the operation of the MRF in consultation with the LBBGCSG.

## 5.2 Design

19. This section will identify the design for the construction of a mammalian predator-proof exclusion fence on a site-by-site basis (dependent on the sites identified). The evidence base provided in support of the proposed compensatory measures (Habitats Regulations Assessment Without Prejudice Derogation Case (document reference 4.11)) and engagement with the LBBGCSG will be important in informing the specific design aspects of this measure.

## 5.3 Delivery Process

20. This section will identify the delivery process, including a timetable for delivery, nature and status of all consents, commercial agreements (including land access rights) and other relevant approvals that may be necessary for the compensation measure and a programme for any outstanding consents. The evidence base contained within the Habitats Regulations Assessment Without

Prejudice Derogation Case (document reference 4.11) will help inform these aspects.

## 5.4 Monitoring and Adaptive Management

21. This section will identify the monitoring and adaptive management principles and processes that will have been agreed with the LBBGCSG, including survey methods; success criteria; adaptive management measures; timescales for the monitoring and monitoring reports to be delivered; and details of the mechanism to determine the need for any alternative compensation measures and/or implementation of adaptive management measures. It will be developed taking into account the evidence base that has been provided in support of the proposed compensation measures set out within the Habitats Regulations Assessment Without Prejudice Derogation Case (Document Reference 4.11). Following discharge of the lesser black-backed gull CIMP, the LBBGCSG will be engaged in reviewing on-going monitoring and implementing adaptive management if required as outlined in the **Section 3** (Consultation) above.

## 5.5 Reporting

22. This section will set out the reporting requirements associated with the monitoring and adaptive management. In doing so, it will confirm the necessary objectives and timescales for the reporting.